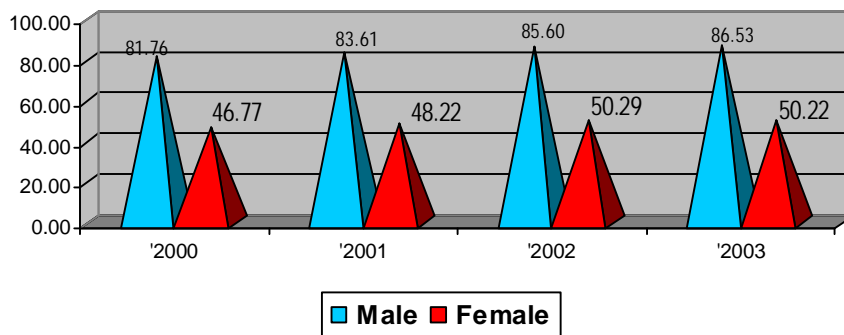


GENDER STATISTIC on LABOR SECTOR 2000-2003

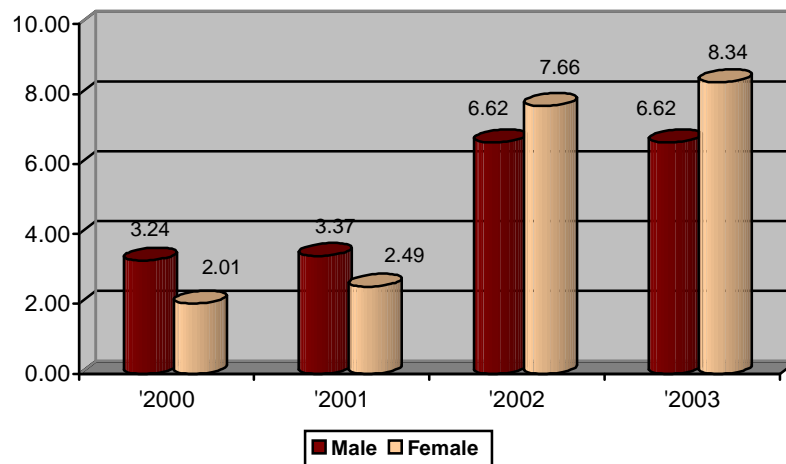
Amount of Labor Force participation was described through indicator of TPAK (Labor Force Participation Rate), which was percentage population that was included on Labor Force toward working age population (population of 15 years old and above). TPAK and Open Unemployment Rate was main indicator of labor that was often used to see development in labor sector.

Women's TPAK was always lower than men's. This matter was influenced by the amount of women that took care on household, and the existence of culture that put men as main breadwinner in family.

**Labor Force Participation Rate (TPAK) By Sex
2000-2003**



**UNEMPLOYMENT By Sex
2000-2003**

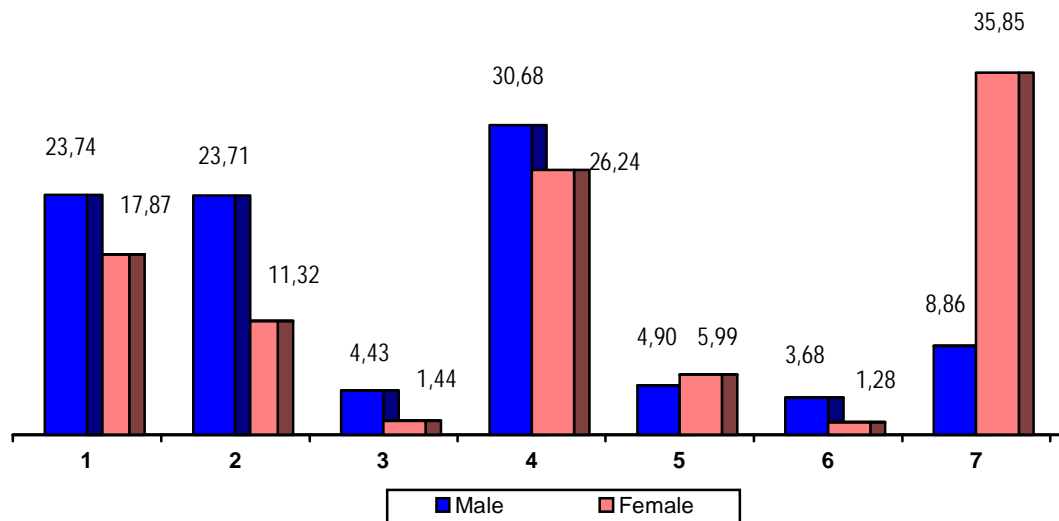


Generally, during period 2000 until 2003 was happened improvement of unemployment rate in Indonesia, for men as well as women. This matter possibility was caused on the beginning after crisis all populations wanted to work anything to fulfill their necessity without selected job. While after economic condition getting better, they started to look for better job.

On 2000 and 2001, women open unemployment rate was lower than men. This matter probably was caused on the beginning after crisis women were more capable to create job, because women wanted did anything job to fulfill their and family need.

But on 2002 and 2003 women unemployment rate was higher that men. This condition probably caused by job vacancy generally open wider to men, because job characteristic that was appropriated to women generally more specific and women education level generally lower than men.

Population Percentage 15 Years above according to Job Status
Year 2003

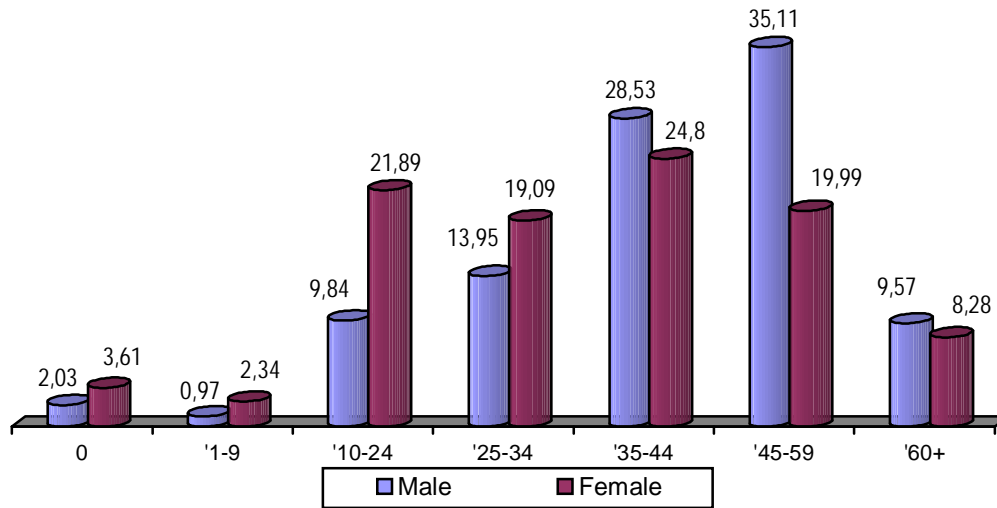


Explanation:

1. Own-account workers
2. Self-employed assisted by family members or temporary workers
3. Employer with permanent workers
4. Employee
5. Casual employee in agriculture
6. Casual employee not in agriculture
7. Unpaid worker

Nationally population that worked as labor/worker was as big as 29.13%. job status patter between men and women was different. Female population mostly worked as unpaid worker (35.85 %), while male population mostly worked as employee (30.68%). This matter was caused by women education rate usually was lower than men, so men had more opportunity to get job than women.

**Population Percentage 15 years old and above according to
Total Working Hours 2003 (BPS, Susenas)**



Someone was said fully worked if his/her working hours reached 35 hours or more in a week. Nationally population percentage that was grouped fully worked was 66.21%. If it was seen according to gender, around 73% male population fully worked in a week, while women only around 53%. Thus, generally women had lower working hours than men.

Amount of women that worked under normal working hours (less than 35 hours per week) showed the amount of women that included as under employment. Minimum of women working hours probably was caused by women double role, which was besides worked also need to take care household so women must chose or was forced to part-time worked.

Population Percentage 15 Years above according to Industry and Gender
Year 2003

Industry	Male	Female	M+F
(1)	(2)	(3)	(4)
Agriculture	47.15	48.65	47.67
Mining	1.08	0.34	0.83
Industry	10.92	13.44	11.80
Electric, gas and water	0.34	0.09	0.25
Construction	5.93	0.28	3.96
Trade	14.95	23.44	17.90
Transportation & Communication	7.90	0.55	5.34
Finance	1.32	0.84	1.15
Service	10.31	12.24	10.98
Other	0.10	0.13	0.11
Total	100.00	100.00	100.00

Source: BPS, National Socio-Economy Survey (SUSENAS) Year 2003

Seen from industry or sector, Susenas data showed agriculture sector still dominated (more than 45%) for male as well as female. The second biggest sector after agriculture was trade sector. But the difference percentage between male and female that worked in this sector looked big, each as big as 14.95% for male and 23.44% for female. Beside trade sector, female also dominated in service sector.

Average of Worker Wages/Salary/Income *) in a Month according to
Educational Attainment and Gender
Year 2001 and 2002

Education Attainment	2001			2002		
	Female	Male	Wage Ratio **)	Female	Male	Wage Ratio **)
(1)	(2)	(3)	(4)	(5)	(6)	(7)
NOT COMPLETED PRIMARY SCHOOL	172.018	326.394	52.7	187.590	367.284	51.1
PRIMARY SCHOOL	232.726	388.502	59.9	264.112	435.676	60.6
JUNIOR HIGH SCHOLL	340.685	489.951	69.5	399.176	558.648	71.5
SENIOR HIGH SCHOOL	555.175	711.013	78.1	640.035	809.694	79.0

DIPLOMA +	914.036	1.203.660	75.9	977.652	1.348.203	72.5
Total	419.004	582.236	72.0	475.192	654.371	72.6

Source: National Labor Force Survey (Sakernas) Year 2001-2002

Explanation:

*) Worker: labor/employee and freelance worker

**) Wage ratio was female wage divided with male wage

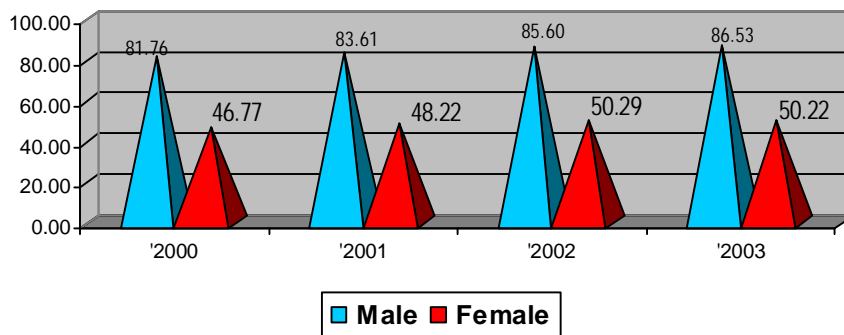
For all education level, female worker wage/salary/income was always lower than male worker wage/salary/income. This matter reflected from wage ratio that less from 100 for all education level. The lowest ratio was happened for education level SD and under was 52.7% on 2001 became 51.1% on 2002. While the highest ratio was happened for education level SMU/SMK, with ratio was 78.1% on 2001 became 79% on 2002.

GENDER STATISTIC on LABOR SECTOR 2000-2003

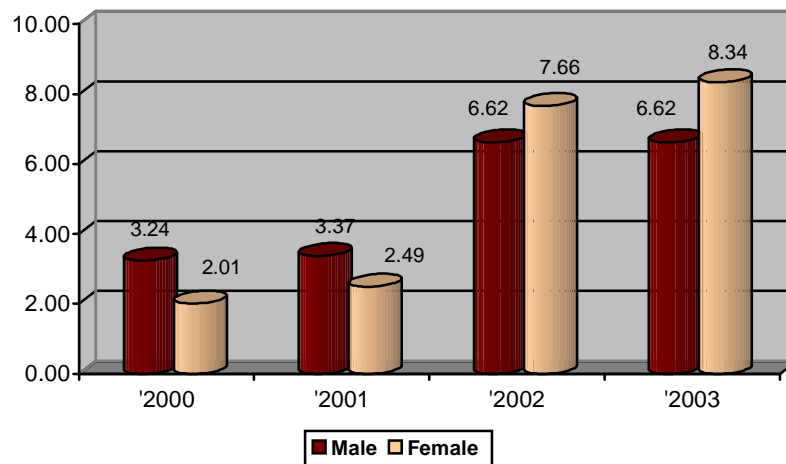
Amount of Labor Force participation was described through indicator of TPAK (Labor Force Participation Rate), which was percentage population that was included on Labor Force toward working age population (population of 15 years old and above). TPAK and Open Unemployment Rate was main indicator of labor that was often used to see development in labor sector.

Women's TPAK was always lower than men's. This matter was influenced by the amount of women that took care on household, and the existence of culture that put men as main breadwinner in family.

**Labor Force Participation Rate (TPAK) By Sex
2000-2003**



**UNEMPLOYMENT By Sex
2000-2003**

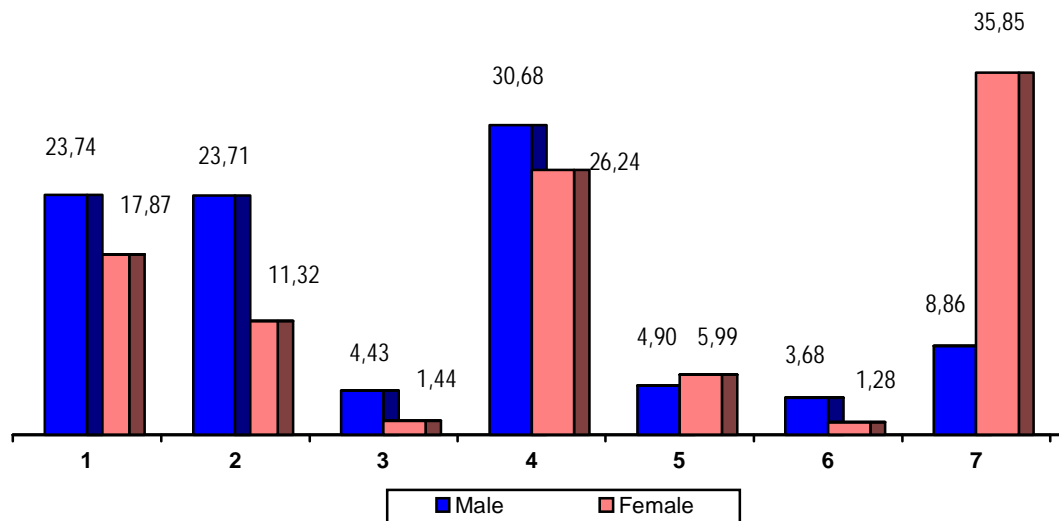


Generally, during period 2000 until 2003 was happened improvement of unemployment rate in Indonesia, for men as well as women. This matter possibility was caused on the beginning after crisis all populations wanted to work anything to fulfill their necessity without selected job. While after economic condition getting better, they started to look for better job.

On 2000 and 2001, women open unemployment rate was lower than men. This matter probably was caused on the beginning after crisis women were more capable to create job, because women wanted did anything job to fulfill their and family need.

But on 2002 and 2003 women unemployment rate was higher that men. This condition probably caused by job vacancy generally open wider to men, because job characteristic that was appropriated to women generally more specific and women education level generally lower than men.

Population Percentage 15 Years above according to Job Status
Year 2003

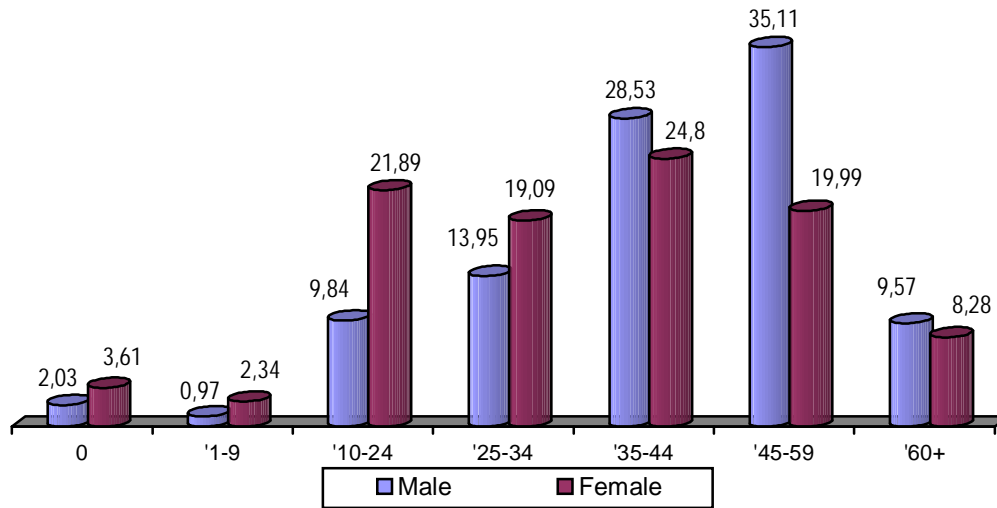


Explanation:

1. Own-account workers
2. Self-employed assisted by family members or temporary workers
3. Employer with permanent workers
4. Employee
5. Casual employee in agriculture
6. Casual employee not in agriculture
7. Unpaid worker

Nationally population that worked as labor/worker was as big as 29.13%. job status patter between men and women was different. Female population mostly worked as unpaid worker (35.85 %), while male population mostly worked as employee (30.68%). This matter was caused by women education rate usually was lower than men, so men had more opportunity to get job than women.

**Population Percentage 15 years old and above according to
Total Working Hours 2003 (BPS, Susenas)**



Someone was said fully worked if his/her working hours reached 35 hours or more in a week. Nationally population percentage that was grouped fully worked was 66.21%. If it was seen according to gender, around 73% male population fully worked in a week, while women only around 53%. Thus, generally women had lower working hours than men.

Amount of women that worked under normal working hours (less than 35 hours per week) showed the amount of women that included as under employment. Minimum of women working hours probably was caused by women double role, which was besides worked also need to take care household so women must chose or was forced to part-time worked.

Population Percentage 15 Years above according to Industry and Gender
Year 2003

Industry	Male	Female	M+F
(1)	(2)	(3)	(4)
Agriculture	47.15	48.65	47.67
Mining	1.08	0.34	0.83
Industry	10.92	13.44	11.80
Electric, gas and water	0.34	0.09	0.25
Construction	5.93	0.28	3.96
Trade	14.95	23.44	17.90
Transportation & Communication	7.90	0.55	5.34
Finance	1.32	0.84	1.15
Service	10.31	12.24	10.98
Other	0.10	0.13	0.11
Total	100.00	100.00	100.00

Source: BPS, National Socio-Economy Survey (SUSENAS) Year 2003

Seen from industry or sector, Susenas data showed agriculture sector still dominated (more than 45%) for male as well as female. The second biggest sector after agriculture was trade sector. But the difference percentage between male and female that worked in this sector looked big, each as big as 14.95% for male and 23.44% for female. Beside trade sector, female also dominated in service sector.

Average of Worker Wages/Salary/Income *) in a Month according to
Educational Attainment and Gender
Year 2001 and 2002

Education Attainment	2001			2002		
	Female	Male	Wage Ratio **)	Female	Male	Wage Ratio **)
(1)	(2)	(3)	(4)	(5)	(6)	(7)
NOT COMPLETED PRIMARY SCHOOL	172.018	326.394	52.7	187.590	367.284	51.1
PRIMARY SCHOOL	232.726	388.502	59.9	264.112	435.676	60.6
JUNIOR HIGH SCHOLL	340.685	489.951	69.5	399.176	558.648	71.5
SENIOR HIGH SCHOOL	555.175	711.013	78.1	640.035	809.694	79.0

DIPLOMA +	914.036	1.203.660	75.9	977.652	1.348.203	72.5
Total	419.004	582.236	72.0	475.192	654.371	72.6

Source: National Labor Force Survey (Sakernas) Year 2001-2002

Explanation:

*) Worker: labor/employee and freelance worker

**) Wage ratio was female wage divided with male wage

For all education level, female worker wage/salary/income was always lower than male worker wage/salary/income. This matter reflected from wage ratio that less from 100 for all education level. The lowest ratio was happened for education level SD and under was 52.7% on 2001 became 51.1% on 2002. While the highest ratio was happened for education level SMU/SMK, with ratio was 78.1% on 2001 became 79% on 2002.