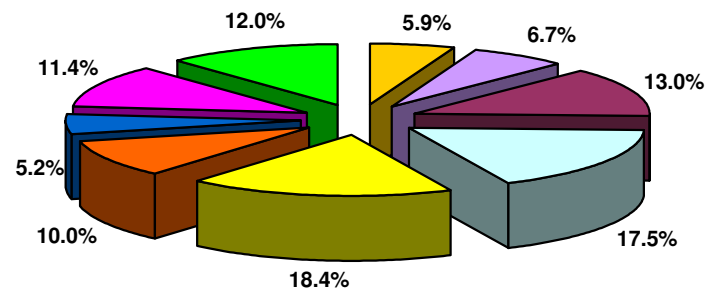


**CARTA 2.2 : TABURAN GUNA TENAGA PEREMPUAN MENGIKUT PEKERJAAN, 2004**

*Chart 2.2 : Distribution of Female Employment by Occupation, 2004*



- Penggubal undang-undang, pegawai kanan & pengurus / Legislators, senior officials & managers
- Profesional / Professionals
- Juruteknik & profesional bersekutu / Technicians & associate professionals
- Pekerja perkeranian / Clerical workers
- Pekerja perkhidmatan, pekerja kedai & jurujual / Service workers, shop and market sales workers
- Pekerja mahir pertanian & perikanan / Skilled agricultural & fishery workers
- Pekerja pertukangan & yang berkaitan / Craft and related trade workers
- Operator loji & mesin serta pemasang / Plant & machine operators and assemblers
- Pekerja asas / Elementary Workers